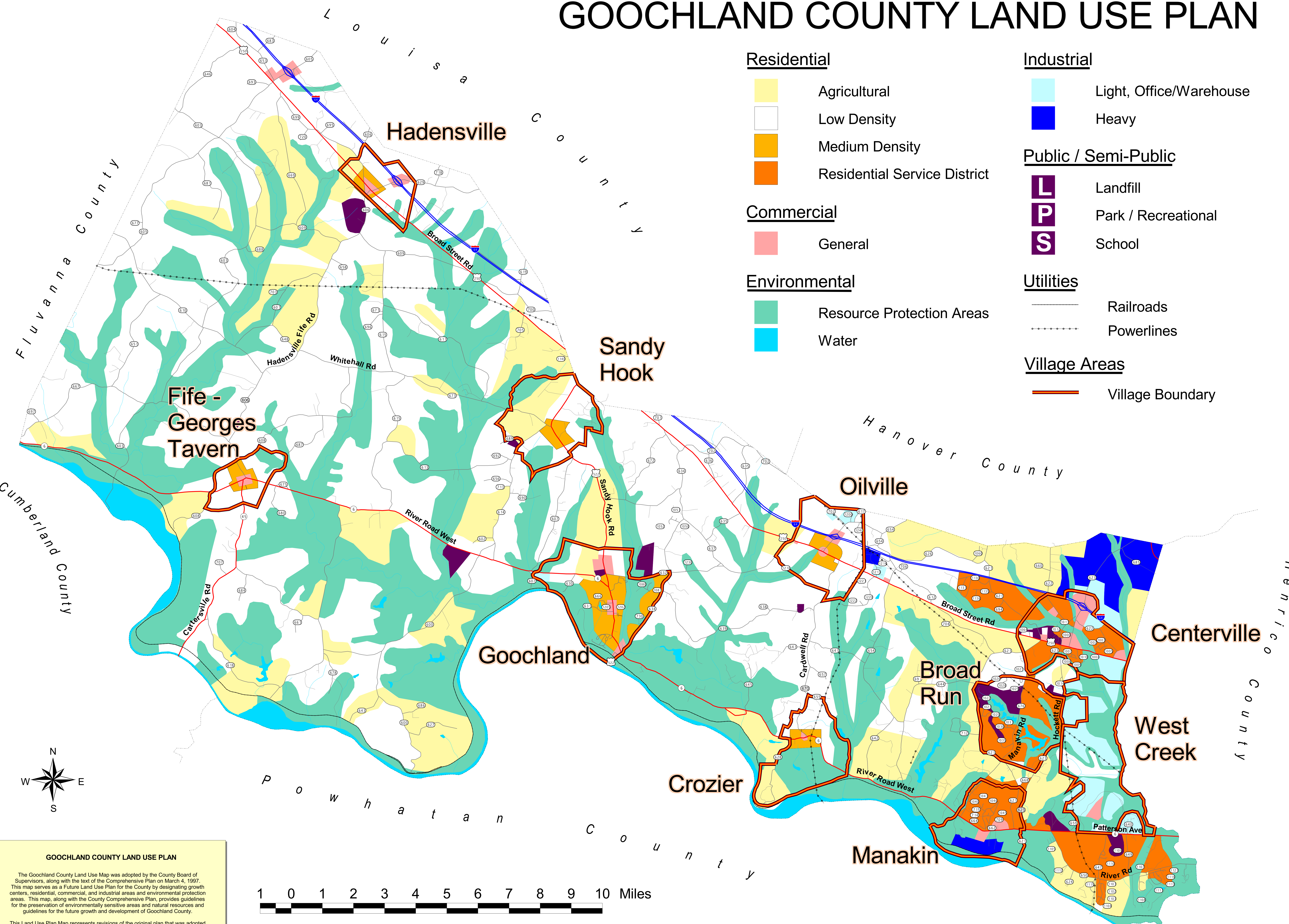


GOOCHLAND COUNTY LAND USE PLAN



Residential

- Agricultural
- Low Density
- Medium Density
- Residential Service District

Commercial

- General

Environmental

- Resource Protection Areas
- Water

Industrial

- Light, Office/Warehouse
- Heavy

Public / Semi-Public

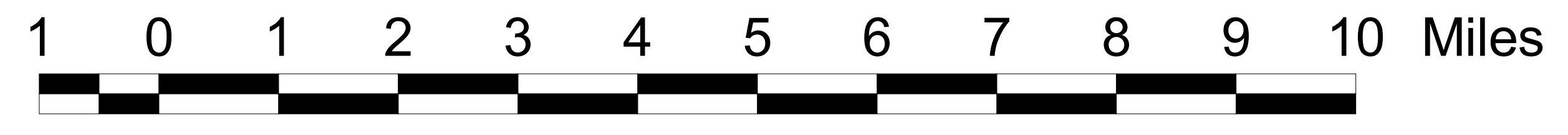
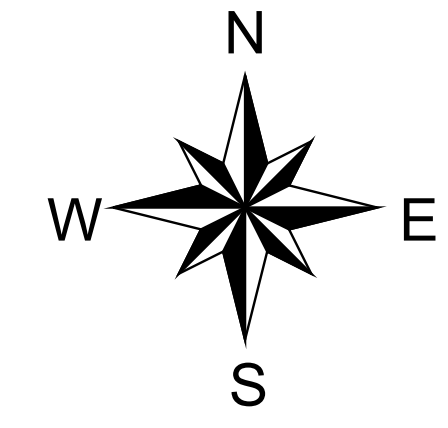
- L Landfill
- P Park / Recreational
- S School

Utilities

- Railroads
- Powerlines

Village Areas

- Village Boundary



GOOCHLAND COUNTY LAND USE PLAN

The Goochland County Land Use Map was adopted by the County Board of Supervisors, along with the text of the Comprehensive Plan on March 4, 1997. This map serves as a Future Land Use Plan for the County by designating growth centers, residential, commercial, and industrial areas and environmental protection areas. This map, along with the County Comprehensive Plan, provides guidelines for the preservation of environmentally sensitive areas and natural resources and guidelines for the future growth and development of Goochland County.

This Land Use Plan Map represents revisions of the original plan that was adopted on March 12, 1975. During 1996 and 1997 the County Planning Commission, after holding several public workshops, recommended revisions to the County Board of Supervisors. This map represents the official Land Use Plan for the County incorporating revisions approved in 1997.