

*The Richmond-Petersburg MSA at a Glance*

A map of the state of Virginia is shown in blue. Within the state, the Richmond-Petersburg Metropolitan Statistical Area (MSA) is highlighted in green. The text "The Richmond-Petersburg MSA at a Glance" is written in a black, handwritten-style font, arching over the map.

A Sample of Economic & Demographic Characteristics  
for the Richmond-Petersburg Metropolitan Statistical Area  
(RIPE MSA)  
October 2004

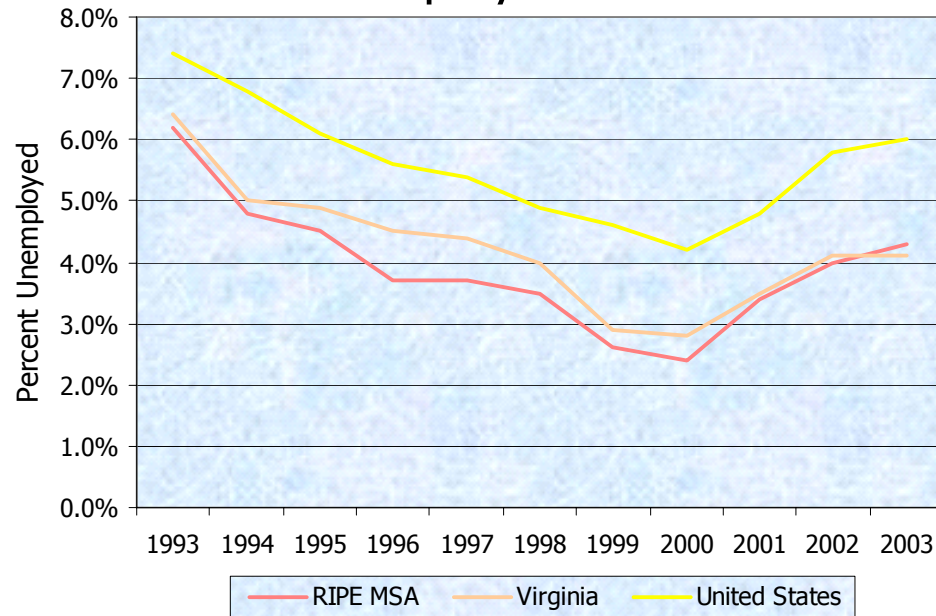


Richmond Regional Planning District Commission  
2104 West Laburnum Avenue, Suite 101  
Richmond, Virginia 23227  
Phone: (804) 367-6001  
Fax: (804) 367-4375  
[www.richmondregional.org](http://www.richmondregional.org)

## Unemployment Rates

	1993	1994	1995	1996	1997	1998	1999	2000	2001	2002	2003
Charles City County	8.2%	7.0%	5.8%	4.9%	4.7%	3.3%	2.8%	2.7%	6.1%	5.5%	5.6%
Chesterfield County	4.1%	3.9%	3.1%	3.0%	2.8%	2.2%	2.0%	1.6%	2.5%	3.0%	3.2%
Goochland County	4.2%	4.0%	2.9%	2.5%	2.6%	2.1%	1.6%	1.3%	2.2%	3.2%	3.3%
Hanover County	3.3%	3.0%	2.2%	2.2%	2.5%	1.8%	1.6%	1.3%	2.4%	2.7%	2.7%
Henrico County	3.9%	3.5%	2.9%	3.0%	2.8%	2.1%	1.9%	1.7%	3.3%	3.5%	3.7%
New Kent County	4.6%	4.5%	3.2%	3.3%	3.0%	2.7%	2.0%	1.6%	3.4%	3.5%	3.8%
Powhatan County	3.5%	3.6%	2.7%	2.5%	2.9%	1.8%	1.7%	1.3%	2.1%	2.6%	2.7%
Richmond City	6.3%	6.0%	5.2%	5.3%	4.8%	3.8%	3.3%	3.0%	5.0%	6.2%	6.5%
Dinwiddie County	6.3%	6.4%	4.1%	4.2%	4.1%	2.7%	2.6%	2.0%	2.9%	4.0%	4.2%
Prince George County	4.2%	4.5%	4.6%	3.8%	3.4%	2.9%	2.7%	2.2%	3.4%	3.4%	4.0%
Colonial Heights City	5.1%	4.7%	4.5%	4.0%	3.9%	2.8%	2.4%	2.5%	3.5%	4.4%	4.8%
Hopewell City	7.3%	6.5%	5.5%	6.0%	5.5%	4.4%	4.1%	3.2%	5.4%	6.6%	7.2%
Petersburg City	9.1%	9.4%	7.0%	8.1%	7.5%	5.9%	5.2%	3.9%	6.4%	8.2%	10.3%
<b>RIPE MSA</b>	6.2%	4.8%	4.5%	3.7%	3.7%	3.5%	2.6%	2.4%	3.4%	4.0%	4.3%
<b>Virginia</b>	6.4%	5.0%	4.9%	4.5%	4.4%	4.0%	2.9%	2.8%	3.5%	4.1%	4.1%
<b>United States</b>	7.4%	6.8%	6.1%	5.6%	5.4%	4.9%	4.6%	4.2%	4.8%	5.8%	6.0%

## Unemployment Rates



Source: Virginia Employment Commission, Estimated Labor Force Components

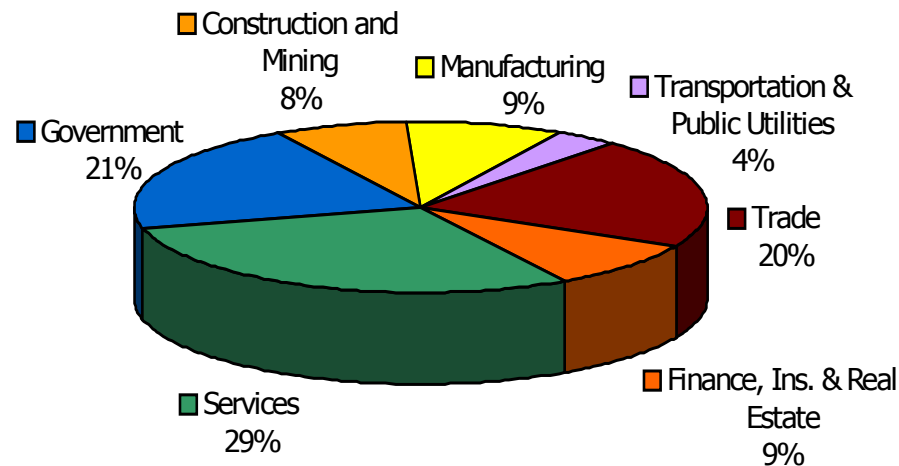
## Non-Agricultural Employment by Sector (in thousands)

	1994	1995	1996	1997	1998	1999	2000	2001	2002	2003
Construction and Mining	28.6	30.1	31.6	33.9	33.8	35.3	37.1	35.3	37.5	38.5
Manufacturing	61.1	60.6	60.2	61.4	61.3	60.8	61	57.5	47.8	45.3
Transportation & Public Utilities	25	26	26.5	27.1	27.6	27.5	27.3	28.5	19	18.3
Trade	114.9	119.7	120.7	123.7	124.4	126.8	128.9	127.9	108.5	107.4
Wholesale	27.6	29	29.3	30.1	30.5	30.5	30.5	29.7	25.6	25.6
Retail	87.3	90.7	91.4	93.6	93.9	96.3	98.4	98.2	63.8	63.5
Finance, Ins. & Real Estate	42	42.4	43	44.2	45.4	47.8	49.2	52.2	46.2	45.9
Services	118.7	125	129.5	134.6	141.2	146.1	151.2	154.3	155.1	151.7
Government	100.8	98.3	96.8	99.9	101.6	102.7	104.1	104.9	106.8	105.1
Federal	15.8	15.6	15.5	16.4	16	15.4	15.7	15.2	15	15
State	43.4	40.7	38.8	39.2	40.1	41	41.4	41.6	41.8	40.5
Local	41.6	42	42.5	44.3	45.5	46.3	47	48.1	49.7	49.7
<b>Total Non-Agri Employment</b>	<b>491.2</b>	<b>502.1</b>	<b>508.3</b>	<b>524.8</b>	<b>535.5</b>	<b>547</b>	<b>558.2</b>	<b>561.8</b>	<b>569.5</b>	<b>564.1</b>

Source: Virginia Employment Commission

Monthly Report on Employment, Hours & Earnings

### Non-Agricultural Employment by Sector 2003



Source: Virginia Employment Commission

# Top 50 Private Employers in the Richmond Region 2004 (Full-Time Employment)

- |   |  |
|---|--|
| 1. Capital One Financial Corp.            | 26. United Parcel Service Inc.           |
| 2. Philip Morris USA                      | 27. BB&T Corp.                           |
| 3. HCA Inc.                               | 28. Southside Regional Medical Center    |
| 4. VCU Health System                      | 29. Lowe's Cos. Inc.                     |
| 5. Wal-Mart Stores Inc.                   | 30. J.C. Penney Co. Inc.                 |
| 6. Wachovia Corp.                         | 31. Overnite Transportation Co.          |
| 7. Bon Secours Richmond Health System     | 32. The Kroger Co.                       |
| 8. Dominion Resources Inc.                | 33. Tyson Foods Inc.                     |
| 9. Ukrop's Super Markets Inc.             | 34. McKesson Corp.                       |
| 10. SunTrust Banks Inc.                   | 35. The Home Depot Inc.                  |
| 11. DuPont                                | 36. Smurfit-Stone Container Corp.        |
| 12. Anthem Inc.                           | 37. CarMax                               |
| 13. Circuit City Stores Inc.              | 38. Target Corp.                         |
| 14. Bank of America Corp.                 | 39. 7-Eleven Inc.                        |
| 15. Verizon Virginia Inc.                 | 40. Hecht's                              |
| 16. Delhaize America (Food Lion)          | 41. Alstom Power Inc.                    |
| 17. Honeywell International Inc.          | 42. Pinkerton Services Corp. (Securitas) |
| 18. Infineon Technologies Richmond        | 43. Unistaff Inc.                        |
| 19. Alcoa Inc.                            | 44. Cadmus Communications Corp.          |
| 20. Federal Reserve Bank of Richmond Inc. | 45. Sears, Roebuck & Co.                 |
| 21. Wyeth                                 | 46. Kraft Foods Inc.                     |
| 22. Supervalu Inc., Eastern Region        | 47. McGuireWoods                         |
| 23. University of Richmond                | 48. Comcast Corp.                        |
| 24. Media General Inc.                    | 49. Markel Corp.                         |
| 25. GE Financial                          | 50. Southern States Cooperative Inc.     |

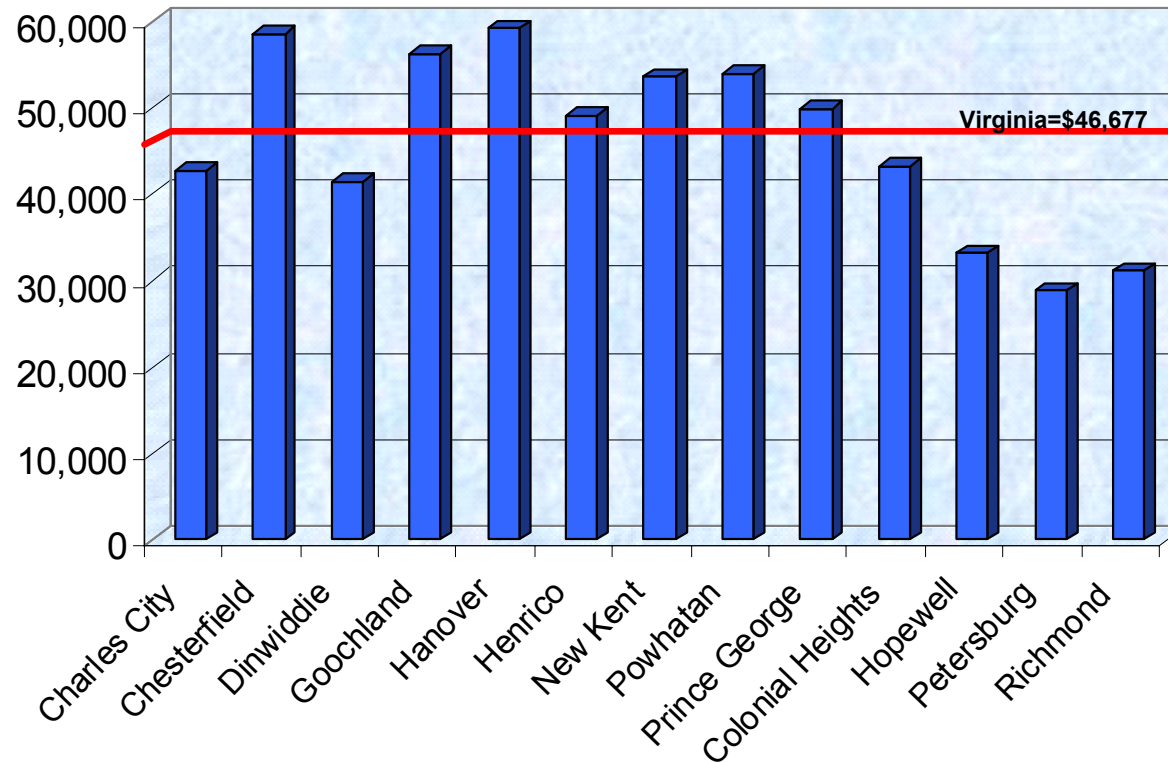
Source: *Richmond-Times Dispatch*, Sunday, April 16, 2004, Business Section

The Top 50 Employers in the Richmond - Petersburg area as of January 1, 2004

## Median Household Income 1999

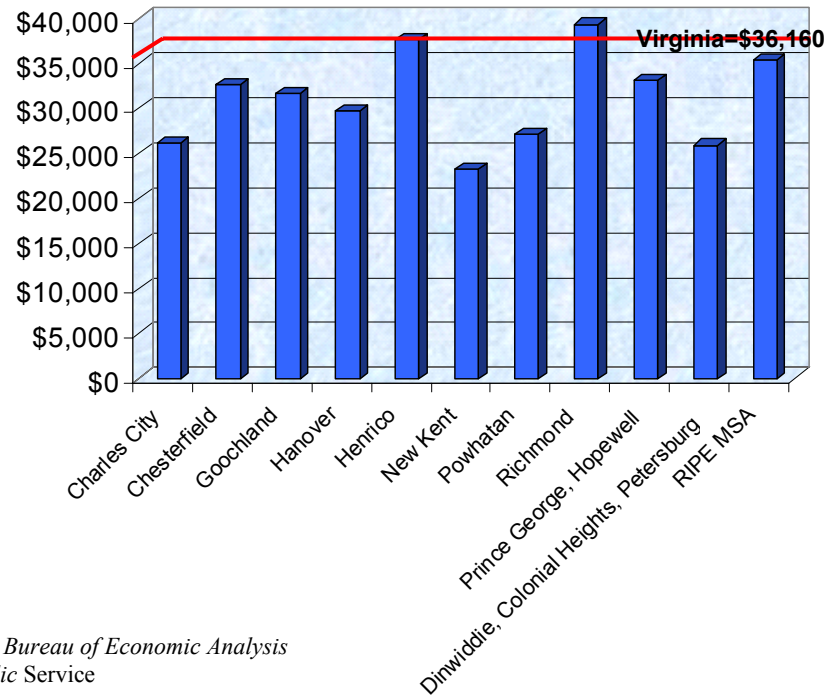
	Charles City	Chesterfield	Dinwiddie	Goochland	Hanover	Henrico	New Kent	Powhatan	Prince George	Colonial Heights	Hopewell	Petersburg	Richmond	RIPE MSA	Virginia
<b>1997</b>	\$37,173	\$55,324	\$34,830	\$50,104	\$53,618	\$44,122	\$49,908	\$49,009	\$44,845	\$40,923	\$32,781	\$25,428	\$29,234	\$40,454	\$40,209
<b>1998</b>	\$40,058	\$58,423	\$37,244	\$54,007	\$57,367	\$47,155	\$52,470	\$52,656	\$46,774	\$42,068	\$33,213	\$26,324	\$31,081	\$41,797	\$42,662
<b>1999</b>	\$42,754	\$58,537	\$41,582	\$56,307	\$59,223	\$49,185	\$53,595	\$53,992	\$49,877	\$43,224	\$33,196	\$28,851	\$31,121	\$46,800	\$46,677

Median Household Income for the RIPE MSA in 1999



## Average Annual Wage per Job for RIPE MSA

	2001	2000	1999	1998	1997	1996	1995	1994	1993
Charles City	\$26,096	\$24,499	\$23,162	\$22,494	\$21,430	\$20,799	\$19,521	\$18,503	\$17,418
Chesterfield	\$32,616	\$31,582	\$30,482	\$29,151	\$27,522	\$26,301	\$25,587	\$24,539	\$24,383
Goochland	\$31,590	\$31,042	\$32,759	\$28,039	\$24,298	\$22,977	\$22,028	\$20,905	\$19,702
Hanover	\$29,656	\$28,951	\$28,088	\$26,715	\$25,743	\$24,719	\$23,464	\$22,695	\$22,307
Henrico	\$37,621	\$36,072	\$34,063	\$31,739	\$30,170	\$28,788	\$27,510	\$26,556	\$26,083
New Kent	\$23,222	\$21,947	\$21,212	\$18,648	\$18,573	\$19,301	\$20,061	\$19,092	\$18,809
Powhatan	\$27,156	\$25,650	\$24,746	\$23,692	\$23,299	\$22,563	\$21,526	\$20,714	\$20,044
Richmond	\$39,324	\$37,875	\$35,916	\$34,603	\$33,024	\$31,484	\$30,194	\$28,993	\$28,167
Prince George, Hopewell	\$33,126	\$32,246	\$31,371	\$31,181	\$30,139	\$29,054	\$28,162	\$27,230	\$26,970
Dinwiddie, Colonial Heights, Petersburg	\$25,909	\$24,793	\$24,012	\$22,599	\$21,409	\$20,813	\$20,030	\$19,409	\$18,689
<b>RIPE MSA</b>	\$35,404	\$34,122	\$32,587	\$31,048	\$29,595	\$28,321	\$27,241	\$26,283	\$25,764
<b>Virginia</b>	\$36,160	\$34,656	\$32,620	\$30,991	\$29,269	\$27,923	\$26,832	\$26,067	\$25,408



Source: U.S. Department of Commerce, Bureau of Economic Analysis  
Weldon Cooper Center for Public Service

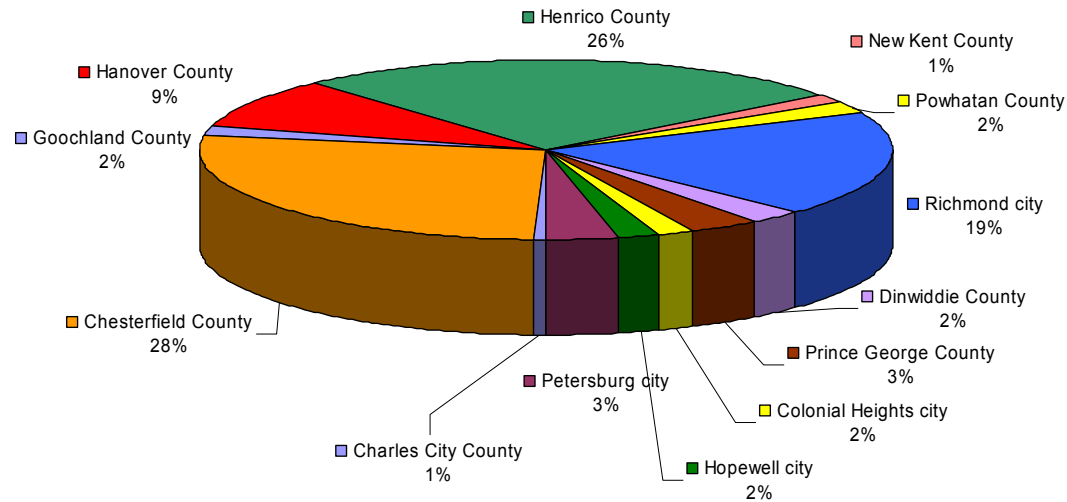
## Population in the RIPE MSA

	1990	2000	2001	2002	2003	2010*
Charles City County	6,282	6,926	6,956	7,057	7,118	7,900
Chesterfield County	209,564	259,903	265,530	270,814	276,840	317,004
Goochland County	14,163	16,863	17,296	17,689	18,138	22,003
Hanover County**	63,306	86,320	88,982	91,814	94,081	106,000
Henrico County	217,849	262,300	265,747	267,841	271,083	277,003
New Kent County	10,445	13,462	13,873	14,255	14,843	16,497
Powhatan County	15,328	22,377	23,153	24,252	24,649	31,004
Richmond City	202,798	197,790	197,478	196,571	194,729	186,008
Dinwiddie County	22,319	24,533	24,424	24,642	24,853	26,804
Prince George County	27,394	33,047	33,984	34,031	34,305	34,504
Colonial Heights City	16,064	16,897	17,006	17,153	17,286	17,400
Hopewell City	23,101	22,354	22,238	22,423	22,391	21,801
Petersburg City	37,027	33,740	33,288	33,117	33,091	31,502
<b>RIPE MSA</b>	<b>865,640</b>	<b>996,512</b>	<b>1,011,956</b>	<b>1,023,661</b>	<b>1,035,410</b>	<b>1,095,430</b>
<b>Virginia Total</b>	<b>6,189,197</b>	<b>7,078,515</b>	<b>7,192,697</b>	<b>7,287,829</b>	<b>7,386,330</b>	<b>7,737,597</b>

\*Projected by the Virginia Employment Commission

\*\*Town of Ashland: Population is included in the population total for Hanover County.

## Population Distribution in the RIPE MSA 2003

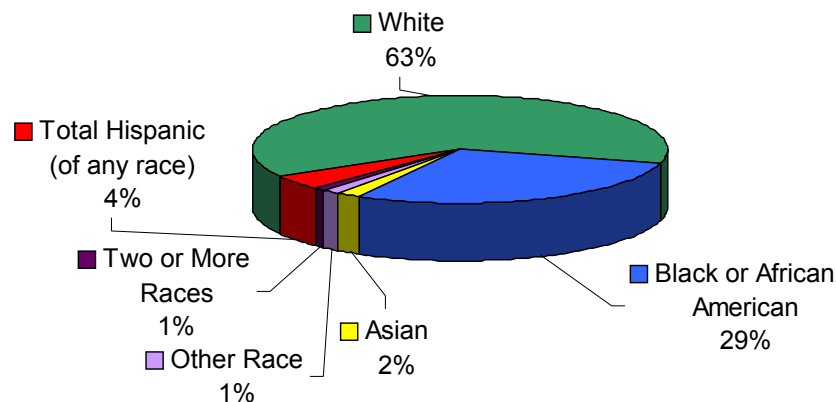


Sources: U.S. Bureau of the Census  
Weldon Cooper Center for Public Service

## Racial Composition of the RIPE MSA 2003

	Total Population	White			Black or African American	American Indian & Alaska Native	Asian	Native Hawaiian & Other Pacific Islander	Other Race	Two or More Races	Total Hispanic (of any race)
		Total	Hispanic	Not Hispanic							
Charles City County	6,926	2,480	23	2,457	3,808	546	7	0	12	85	84
Chesterfield County	259,903	203,148	6,498	196,650	46,799	899	6,332	122	3,472	2,603	15,028
Goochland County	16,863	12,298	94	12,204	4,335	33	80	2	33	115	288
Hanover County	86,320	76,594	727	75,867	8,125	296	710	7	316	588	1,661
Henrico County	262,300	183,524	4,802	178,722	65,444	959	9,638	85	2,562	2,650	11,718
New Kent County	13,462	10,896	139	10,757	2,184	176	73	2	71	131	336
Powhatan County	22,377	18,323	165	18,158	3,797	49	49	6	74	153	359
Richmond City	197,790	78,335	3,439	74,896	114,106	495	2,580	226	2,948	2,048	9,866
Dinwiddie County	24,533	15,936	184	15,752	8,266	55	81	10	97	185	469
Prince George County	33,047	20,792	1,189	19,603	10,976	150	598	58	723	473	3,198
Colonial Heights City	16,897	15,171	221	14,950	1,085	32	463	14	108	132	539
Hopewell City	22,354	14,178	486	13,692	7,565	83	195	17	275	316	1,282
Petersburg City	33,740	6,406	241	6,165	26,736	67	243	9	198	279	901
<b>RIPE MSA</b>	<b>996,512</b>	<b>658,081</b>	<b>18,208</b>	<b>639,873</b>	<b>303,226</b>	<b>3,840</b>	<b>21,049</b>	<b>558</b>	<b>10,889</b>	<b>9,758</b>	<b>45,729</b>

### Racial Distribution for the RIPE MSA



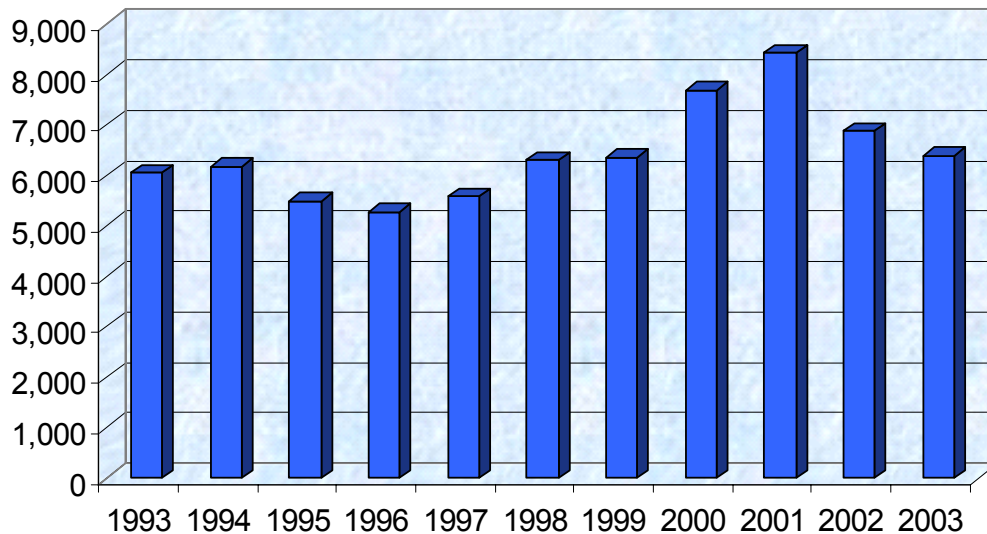
Source: U.S. Bureau of the Census, July 2003



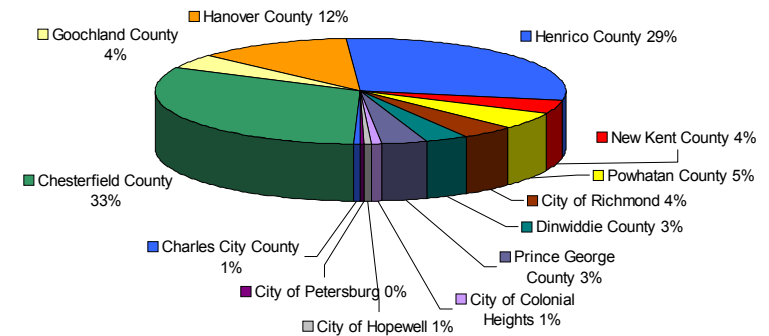
## Single Family Unit Construction

	1993	1994	1995	1996	1997	1998	1999	2000	2001	2002	2003
Charles City County	40	55	57	49	46	49	30	44	42	30	35
Chesterfield County	1,952	2,004	1,675	1,471	1,566	1,799	2,028	1,920	2,417	2,503	2,024
Goochland County	150	182	175	189	198	218	260	223	246	267	286
Hanover County	986	1,008	812	967	996	1,091	1,059	874	902	954	788
Henrico County	1,857	1,845	1,678	1,666	1,755	2,067	1,999	1,566	1,638	1,886	1,841
New Kent County	126	122	149	140	150	166	133	157	192	215	255
Powhatan County	307	323	301	311	294	296	298	257	279	343	337
Richmond City	147	125	187	147	134	126	133	170	179	161	279
Dinwiddie County	191	166	151	148	162	160	136	140	182	171	213
Prince George County	219	253	199	101	176	224	152	213	210	244	222
Colonial Heights City	41	52	44	39	51	59	39	41	58	54	57
Hopewell City	19	22	32	40	27	22	70	66	56	51	44
Petersburg City	16	14	39	10	30	28	25	24	18	8	10
<b>RIPE MSA</b>	<b>6,051</b>	<b>6,171</b>	<b>5,499</b>	<b>5,278</b>	<b>5,585</b>	<b>6,305</b>	<b>6,362</b>	<b>7,695</b>	<b>8,420</b>	<b>6,887</b>	<b>6,391</b>

Single Family Unit Construction in the RIPE MSA



Distribution of Single Family Unit Construction in the RIPE MSA in 2003

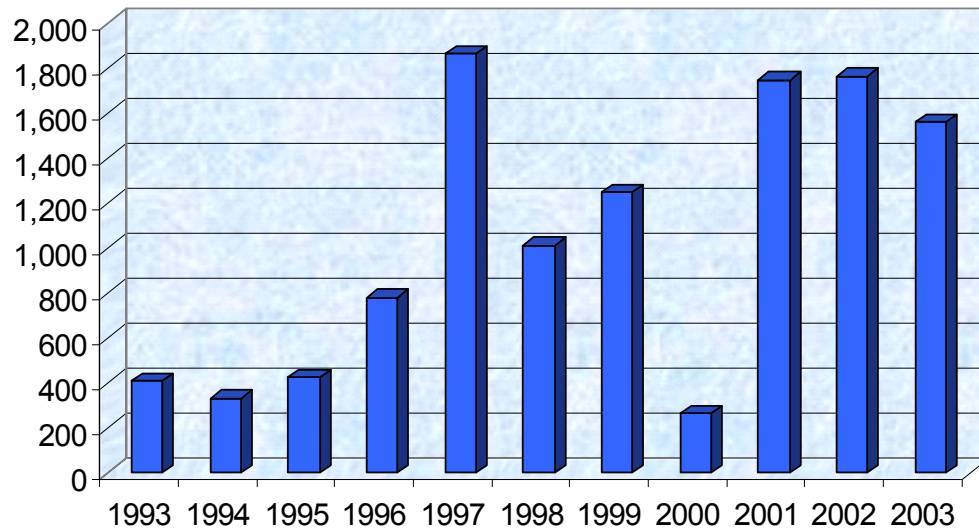


Source: U.S. Bureau of the Census, State/County Permit Authorized Construction in Permit Issuing Place

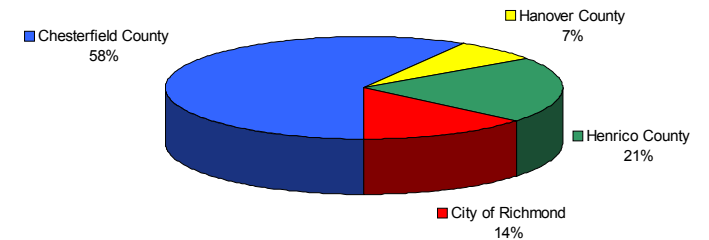
## Multiple Unit Construction

	1993	1994	1995	1996	1997	1998	1999	2000	2001	2002	2003
Charles City County	0	0	0	0	0	0	0	0	0	0	0
Chesterfield County	4	0	294	180	240	501	725	38	503	816	909
Goochland County	0	0	0	3	0	2	0	0	0	0	0
Hanover County	88	122	5	56	150	0	60	75	0	0	108
Henrico County	71	90	100	298	1,166	275	348	0	1,042	590	326
New Kent County	0	0	0	0	0	0	0	0	0	0	0
Powhatan County	0	0	0	0	2	0	0	0	2	0	0
City of Richmond	31	4	21	242	232	0	115	100	104	355	216
Dinwiddie County	60	60	0	0	0	0	0	4	0	2	0
Prince George County	0	27	0	0	0	158	0	40	11	0	0
Colonial Heights City	146	4	0	0	62	0	0	0	88	0	0
Hopewell City	6	16	4	0	14	75	2	6	0	0	0
Petersburg City	0	10	0	0	0	2	0	0	0	0	0
<b>RIPE MSA</b>	<b>406</b>	<b>333</b>	<b>424</b>	<b>779</b>	<b>1,866</b>	<b>1,013</b>	<b>1,250</b>	<b>263</b>	<b>1,750</b>	<b>1,763</b>	<b>1,559</b>

Multi-Family Unit Construction in the RIPE MSA



Distribution of Multi-Family Unit Construction in the RIPE MSA in 2003



Source: U.S. Bureau of the Census, State/County Permit Authorized Construction in Permit Issuing Place

## Projected School Enrollment (2007-2008)

	K	1st	2nd	3rd	4th	5th	6th	7th	8th	9th	10th	11th	12th	Not graded	Total
Charles City County	57	55	59	65	78	62	64	61	84	80	72	52	59	0	848
Chesterfield County	3,827	3,937	4,044	3,952	4,267	4,192	4,452	4,445	4,470	4,833	4,475	4,012	4,180	0	55,085
Goochland County	184	181	171	145	165	158	152	154	164	156	176	182	154	45	2,187
Hanover County	1,469	1,521	1,506	1,644	1,508	1,492	1,528	1,546	1,541	1,697	1,406	1,501	1,369	0	19,728
Henrico County	3,270	3,528	3,694	3,721	3,682	3,512	3,668	3,750	3,668	4,061	3,582	3,313	3,309	70	46,829
New Kent County	156	149	178	150	161	199	213	173	198	249	213	209	181	0	2,429
Powhatan County	382	325	310	331	321	325	317	344	415	380	373	316	264	3	4,406
Richmond City	2,260	2,219	2,077	1,940	1,762	1,629	1,690	1,610	1,604	2,005	1,686	1,314	1,290	8	23,093
Dinwiddie County	274	284	312	307	318	307	379	324	387	540	396	353	335	1	4,516
Prince George County	430	429	462	452	421	453	512	528	501	510	490	497	463	8	6,157
Colonial Heights City	189	231	203	199	251	192	197	245	226	240	188	187	196	0	2,745
Hopewell City	335	330	321	283	307	266	262	290	293	382	270	243	203	2	3,787
Petersburg City	410	393	365	376	385	314	389	398	396	480	377	311	263	4	4,861
<b>RIPE MSA</b>	<b>13,242</b>	<b>13,582</b>	<b>13,701</b>	<b>13,564</b>	<b>13,625</b>	<b>13,101</b>	<b>13,824</b>	<b>13,867</b>	<b>13,947</b>	<b>15,613</b>	<b>13,704</b>	<b>12,491</b>	<b>12,267</b>	<b>140</b>	<b>176,669</b>
<b>Virginia</b>	<b>88,813</b>	<b>93,740</b>	<b>93,920</b>	<b>91,590</b>	<b>91,328</b>	<b>90,528</b>	<b>92,026</b>	<b>93,256</b>	<b>93,479</b>	<b>107,031</b>	<b>95,998</b>	<b>88,044</b>	<b>85,051</b>	<b>843</b>	<b>1,205,647</b>

Distribution of Projected School Enrollment in RIPE MSA for 2007-2008

