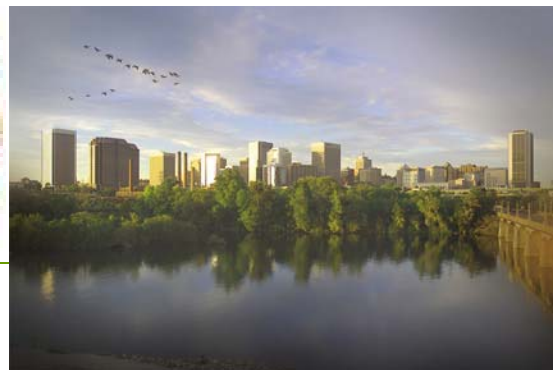


City of Richmond

City Hall, 900 East Broad Street
 Richmond, Virginia 21219
 Phone (804) 646-7000



<http://www.ci.richmond.va.us/>

Community Profile

Population

	1990	2000	2006(est)
Males	92,795	92,068	89,792
Females	110,261	105,722	103,121
Total	203,056	197,790	192,913

Housing

	1990	2000
Total Housing Units	94,141	92,282
Single Family	51,012	52,706
Multi-Family	41,074	38,886
Vacant Housing Units	8,804	7,733
Vacancy Rate	9.4%	8.4%
Owner-Occupied Housing Units	39,515	39,008
Median Home Value	\$66,600	\$87,300
Renter-Occupied Housing Units	45,822	45,541
Median Rent	\$333	\$452
Median Household Income	\$23,551	\$31,121
Median Family Income	\$29,021	\$38,348
Average Household Size	2.25	2.21

Land Area

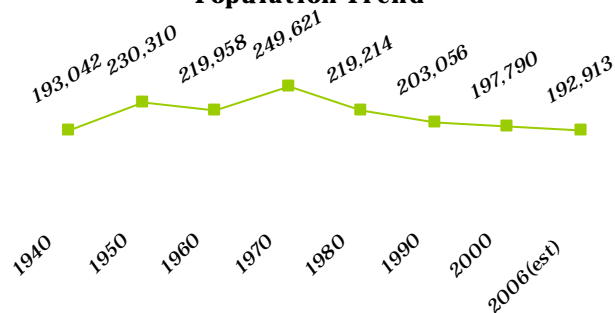
Total square miles	62.52
Persons per square mile	3164

Mayor: Dwight C. Jones

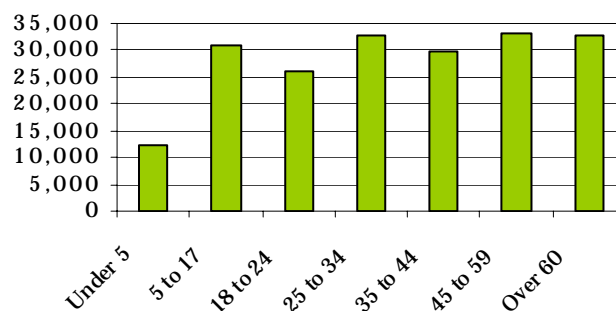
City Council:

President: Kathy C. Graziano, Southwest District 4
 Vice President: Ellen G. Robertson, Gateway District 6
 Bruce Tyler, West End District 1
 Charles R. Samuel, North Central District 2
 Chris A. Hilbert, Northside District 3
 E. Martin Jewell, Central District 5
 Betty L. Squire, East End District 7
 Reva M. Trammell, Southside District 8
 Douglas G. Conner, Jr., South Central District 9
Meetings: 2nd and 4th Mondays, 6 pm, City Hall

Population Trend



2000 Population by Age Group



Impervious Surface (approximate)	1994	2002
Total area (square miles)	19.2	19.5
Percent	30.7%	31.2%

2000 Journey to work	2000	Percent
Total workers 16 and older	88,924	
Drove alone	62,743	70.6%
Carpooled	11,165	12.6%
Public Transportation	7,354	8.3%
Walked or biked	4,910	5.5%
Motorcycle or other	729	0.8%
Worked at home	2,023	2.3%

Land in Conservation (approximate)	
Area (square miles)	2.8
Percent of total land area	4.5%

Source: US Census Bureau 1990 and 2000; ACS 2006, Population Estimates Program; Impervious surface data, Impervious Surface in the Richmond Region, RRPDC, November 14, 2005; conservation data from Virginia Outdoors Foundation and Virginia Department of Conservation and Recreation.

