

Hanover County

7497 County Complex Road

Hanover, VA 23069

Phone: (804) 365-6000



<http://www.co.hanover.va.us>

COMMUNITY PROFILE

Population

	1990	2000	2006(est)
Total Population	63306	86320	98,983
Males	30963	42479	48,979
Females	32343	43841	50,004

Housing

	1990	2000
Total Housing Units	23,727	32,196
Single Family	21,730	29,702
Multi-Family	1,997	2,494
Vacant Housing Units	1,099	1,075
Vacancy Rate	4.6%	3.3%
Owner-Occupied Housing Units	18,892	26,233
Median Home Value	\$91,300	\$143,300
Renter-Occupied Housing Units	3,736	4,888
Median Rent	\$423	\$686
Median Household Income	\$40,683	\$59,223
Median Family Income	\$45,517	\$65,809
Average Household Size	2.79	2.71

Land Area

Total square miles	471
Persons per square mile (2006 est.)	210

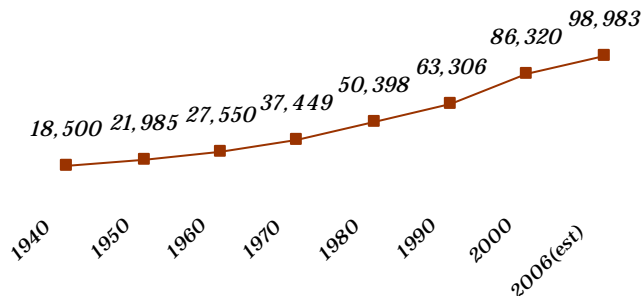
Board of Supervisors:

- John E. Gordon, Jr., Chair (South Anna District)
- G. Ed Via, Vice-Chair (Ashland District)
- Deborah Coats (Mechanicsville District)
- Charles D. McGhee (Henry District)
- Robert R. Setliff (Chickahominy District)
- Aubrey M. Stanley, (Beaverdam District)
- Elton J. Wade, Sr. (Cold Harbor District)

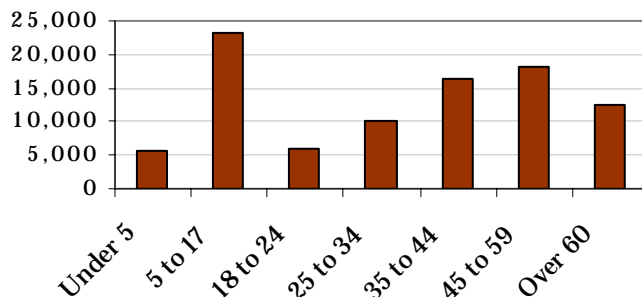
Meeting Times:

- 2nd Wednesday of the month, 2 pm
- 4th Wednesday of the month, 6 pm
- 7516 County Complex Rd, Hanover Courthouse

Population Trend



2000 Population by Age Group



Impervious Surface

	1994	2002
(approximate)		
Total area (square miles)	17	18
Percent	3.6%	3.8%

2000 Journey to work

	2000	Percent
Total workers 16 and older	44,460	
Drove alone	38,322	86.2%
Carpooled	3,589	8.1%
Public Transportation	7	0.2%
Walked or biked	618	1.4%
Motorcycle or other	363	0.8%
Worked at home	1,471	3.3%

Land in Conservation (approximate)

Area (square miles)	14.6
Percent of total land area	3.1%

Source: US Census Bureau, 1990 and 2000; SF1 & SF3, 2006 ACS, Population Estimates Program; Impervious surface data: Impervious Surface in the Richmond Region, RRPDC, November 14, 2005; conservation land data from Virginia Outdoors Foundation, Virginia Department of Conservation and Recreation, and County of Hanover.