

# Goochland County

1800 Sandy Hook Road  
 P.O. Box 10  
 Goochland, Virginia 23063  
 Phone: (804) 556-5800  
 Fax: (804) 556-4617



<http://www.co.goochland.va.us/>

## Community Profile

### Population

	1990	2000	2006(est)
Males	6,932	8,494	—
Females	7,231	8,369	-
Total	14,163	16,863	20,085

### Housing

	1990	2000
Total Housing Units	5,203	6,555
Single Family	4,435	6,009
Multi-Family	63	79
Vacant Housing Units	323	397
Vacancy Rate	6.21%	6.06%
Owner-Occupied Housing Units	4,108	5,338
Median Home Value	\$90,100	\$149,800
Renter-Occupied Housing Units	772	820
Median Rent	\$461	\$589
Median Household Income	\$36,239	\$56,307
Median Family Income	\$40,215	\$64,685
Average Household Size	2.7	2.5

### Land Area

Total square miles	286
Persons per square mile	58.96

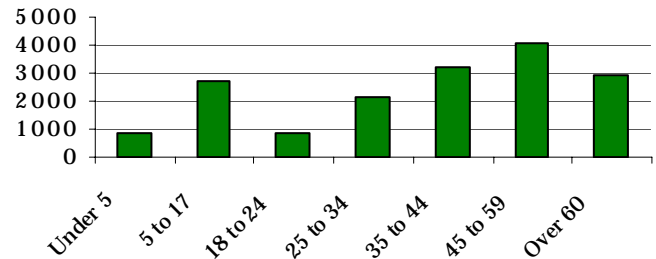
### Board of Supervisors

- Andrew Pryor, District 1
- William E. Quarles, Jr., District 2
- Ned S. Creasey, District 3
- Malvern R. Butler, District 4
- James W. Eads, District 5

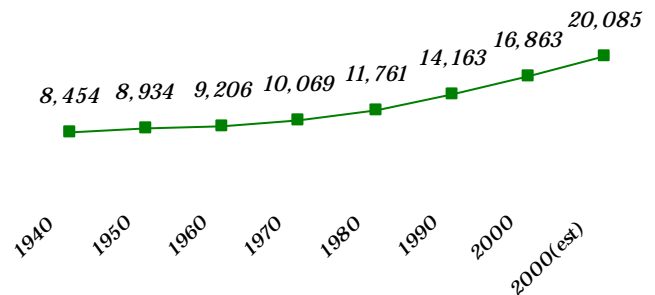
### Meetings:

First Tuesday of the month at 1:30, 1800 Sandy Hook Road

### 2000 Population by Age Group



### Population Trend



<b>Impervious Surface</b>	1994	2002
(approximate)		
Total area (square miles)	8.4	8.74
Percent	2.93%	3.05%
<b>2000 Journey to work</b>	Number	Percent
Total workers 16 and older	8,299	
Drove alone	6,898	83.1%
Carpooled	889	10.7%
Public Transportation	17	0.2%
Walked or biked	81	1.0%
Motorcycle or other	97	1.2%
Worked at home	317	3.8%
<b>Land in Conservation (approximate)</b>		
Area (square miles)		2.2
Percent of total land area		0.8%

Source: US Census Bureau, 1990 and 2000, SF 1, SF 3; ACS, 2006, Populations Estimates Program; Impervious surface data: Impervious Surface in the Richmond Region, RRPDC, November 14, 2005; conservation land data from Virginia Outdoors Foundation and Virginia Department of Conservation and Recreation.