

# Chesterfield County

Main Administration Building  
 9901 Lori Road  
 Chesterfield, Virginia 23832-0040  
 Phone: (804) 748-1000



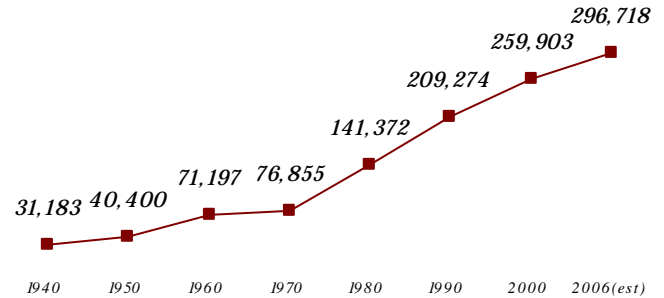
<http://www.co.chesterfield.va.us>

## COMMUNITY PROFILE

### Population

	1990	2000	2006 (est)
Males	102,361	126,588	145,964
Females	106,913	133,315	150,754
Total	209,274	259,903	296,718

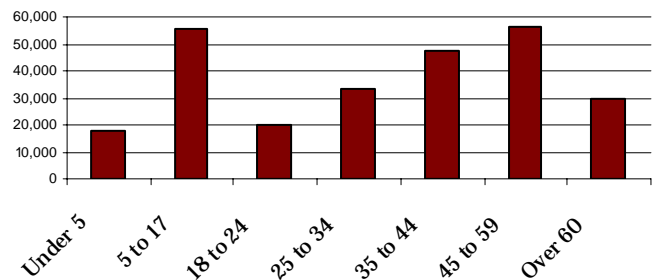
### Population Trend



### Housing

	1990	2000
Total Housing Units	77,329	97,707
Single Family	64,914	83,526
Multi-Family	9,545	14,271
Vacant Housing Units	3,888	3,935
Vacancy Rate	5.0%	4.0%
Owner-Occupied Housing Units	58,385	75,874
Median Home Value	\$87,200	\$119,300
Renter-Occupied Housing Units	15,056	17,898
Median Rent	\$447	\$717
Median Household Income	\$43,604	\$58,537
Median Family Income	\$48,064	\$65,058
Average Household Size	2.82	2.73

### 2000 Population by Age Group



### Land Area

	2000
Total square miles	437
Persons per square mile	595

### Board of Supervisors:

- Art Warren, Chairman (Clover Hill District)
- Daniel A. Gecker, Vice Chairman (Midlothian District)
- Dorothy Jaeckle (Bermuda District)
- James Holland (Dale District)
- Marleen K. Durfee (Matoaca District)

### Meetings:

- Generally the 2nd and 4th Wednesday of the month at 3pm
- Public Meeting Room, County Administration Building, 1001 Iron Bridge Road, Chesterfield, Virginia

Impervious Surface (approximate)	1994	2002
Total area (square miles)	25.89	28.81
Percent	5.93%	6.59%

2000 Journey to work	2000	
Total workers 16 and older	134,313	
Drove alone	115,298	85.8%
Carpooled	12,734	9.5%
Public Transportation	341	0.3%
Walked or biked	1,063	0.8%
Motorcycle or other	729	0.5%
Worked at home	4,148	3.1%

Land in Conservation (approximate)	
Area (square miles)	18.3
Percent of total land area	4.2%

Source: US Census Bureau, 1990 and 2000, 2006 ACS & Population Estimates Program; Impervious surface data: Impervious Surface in the Richmond Region, RRPDC, November 14, 2005; conservation data from Virginia Outdoors Foundation and Virginia Department of Conservation and Recreation.

