

Charles City County

10900 Courthouse Road
 Charles City, VA 23030
 Phone: (804) 652-4701



www.co.charles-city.va.us

COMMUNITY PROFILE

Population

	1990	2000	2006(est)
Males	3071	3398	-
Females	3211	3528	-
Total	6282	6926	7,221

Housing

	1990	2000
Total Housing Units	2314	2895
Single Family	2291	2839
Multi-Family	23	56
Vacant Housing Units	153	225
Vacancy Rate	6.6%	7.8%
Owner-Occupied Housing Units	1863	2268
Median Home Value	\$49,800	\$84,000
Renter-Occupied Housing Units	298	402
Median Rent	\$413	\$540
Median Household Income	\$29,544	\$42,745
Median Family Income	\$31,734	\$49,361
Average Household Size	2.89	2.59

Land Area

Total Square Miles	204
Persons per square mile	34

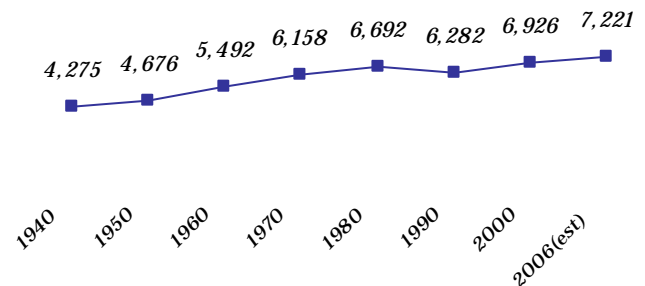
Board of Supervisors:

- Gilbert A. Smith, Chairman
- Sherri M. Bowman, Vice Chairman
- Timothy W. Cotman

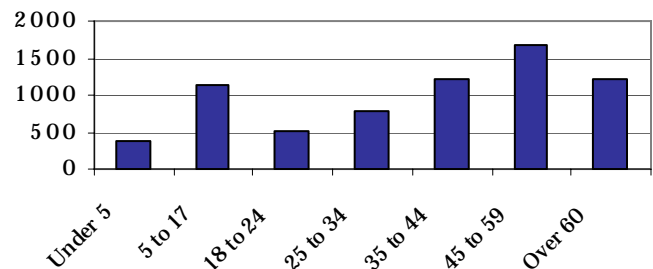
Meetings:

- 4th Tuesday of each month at 7:30 pm
- 10900 Courthouse Road
Charles City, Virginia 23030

Population Trend



2000 Population by Age Group



Impervious Surface (approximate)	1994	2002
Total area (square miles)	4.4	4.6
Percent	2.15%	2.23%

2000 Journey to work

Total workers 16 and older	3,357	
Drove alone	2,681	79.9%
Carpooled	484	14.4%
Public Transportation	22	0.7%
Walked or biked	25	0.7%
Motorcycle or other	45	1.3%
Worked at home	100	3.0%

Land in conservation (approximate)

Area (square miles)	10.9
Percent of total land area	5.3%

Source: US Census Bureau, 1990 and 2000, SF1, & SF3, Population Estimates Program; Impervious surface data; Impervious Surface in the Richmond Region, RRPDC, November 14, 2005; conservation land data from Virginia Outdoors Foundation and Virginia Department of Conservation and Recreation.